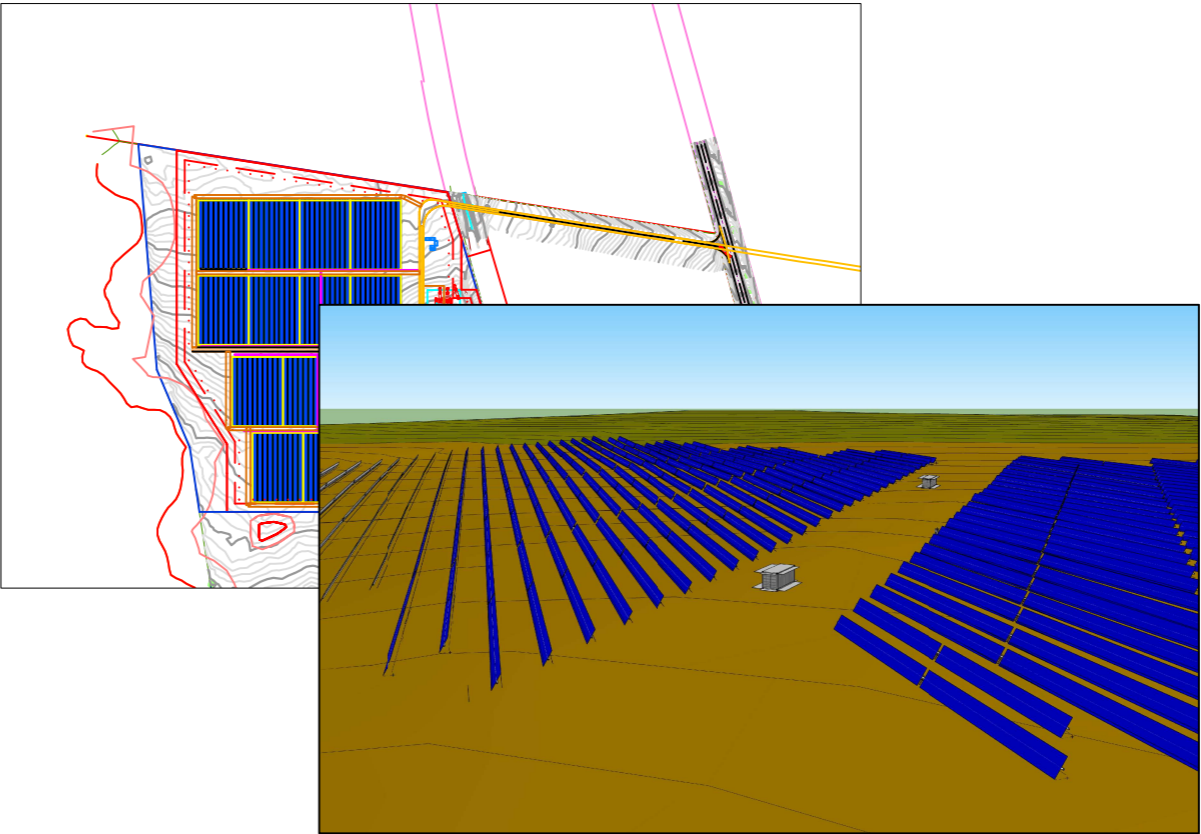


MANILLA SOLAR FARM

DEVELOPMENT APPLICATION SUPPORTING DRAWINGS



PROVIDENCE
ASSET GROUP



CLIENT:
PROVIDENCE ASSET GROUP

SITE ADDRESS:
4133 Manilla Road, Manilla, NSW



+61 8 9356 3119
info@balgroup.com.au
57 Division Street
Welshpool, WA 6106

Licensed Electrical Contractor: EC13257
ABN: 79 149 503 435



REFERENCES	

REVISIONS							
	B	2020.03.16	ISSUED WITH CHANGES	JM	JM	SS	MB
	A	2020.02.28	FIRST ISSUE	JM	JM	SS	MB
	REV.	DATE	DESCRIPTION	DRWN.	DESIGNED	CHKD.	APPR.

THIS DRAWING IS THE PROPERTY OF PROVIDENCE ASSET GROUP AND IS NOT TO BE COPIED (IN WHOLE OR IN PART) FOR ANY PURPOSE OR DISCLOSED TO OTHER PARTIES WITHOUT THE APPROVAL OF PROVIDENCE ASSET GROUP OR AN AUTHORIZED AGENT.

TITLE	
PROVIDENCE ASSET GROUP MANILLA SOLAR FARM DA SUBMISSION	
SCALE	
DNS REVISION B	
PAPER SIZE	
A3	

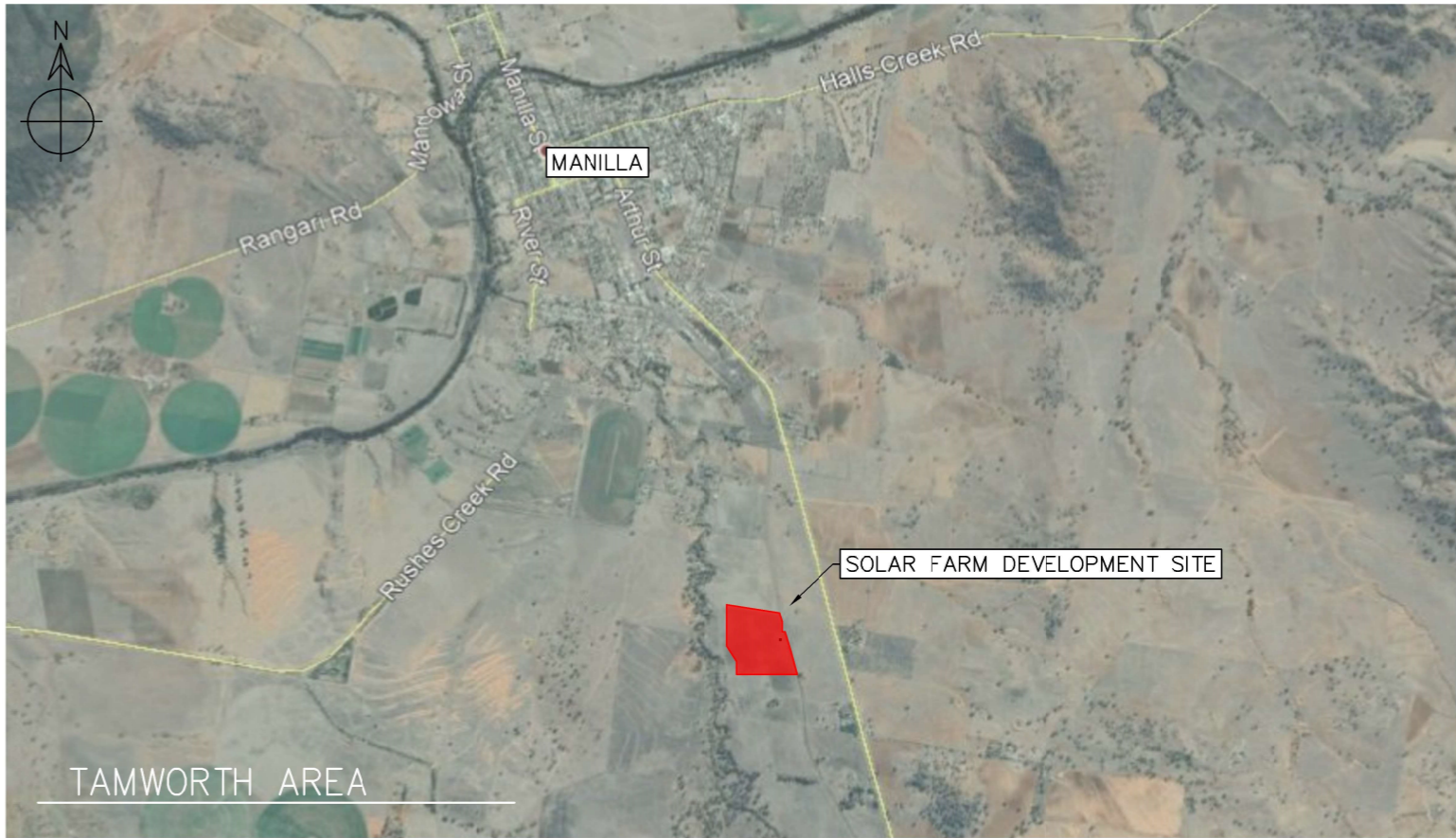
DWG No. 2219-DA-COVER-01-1





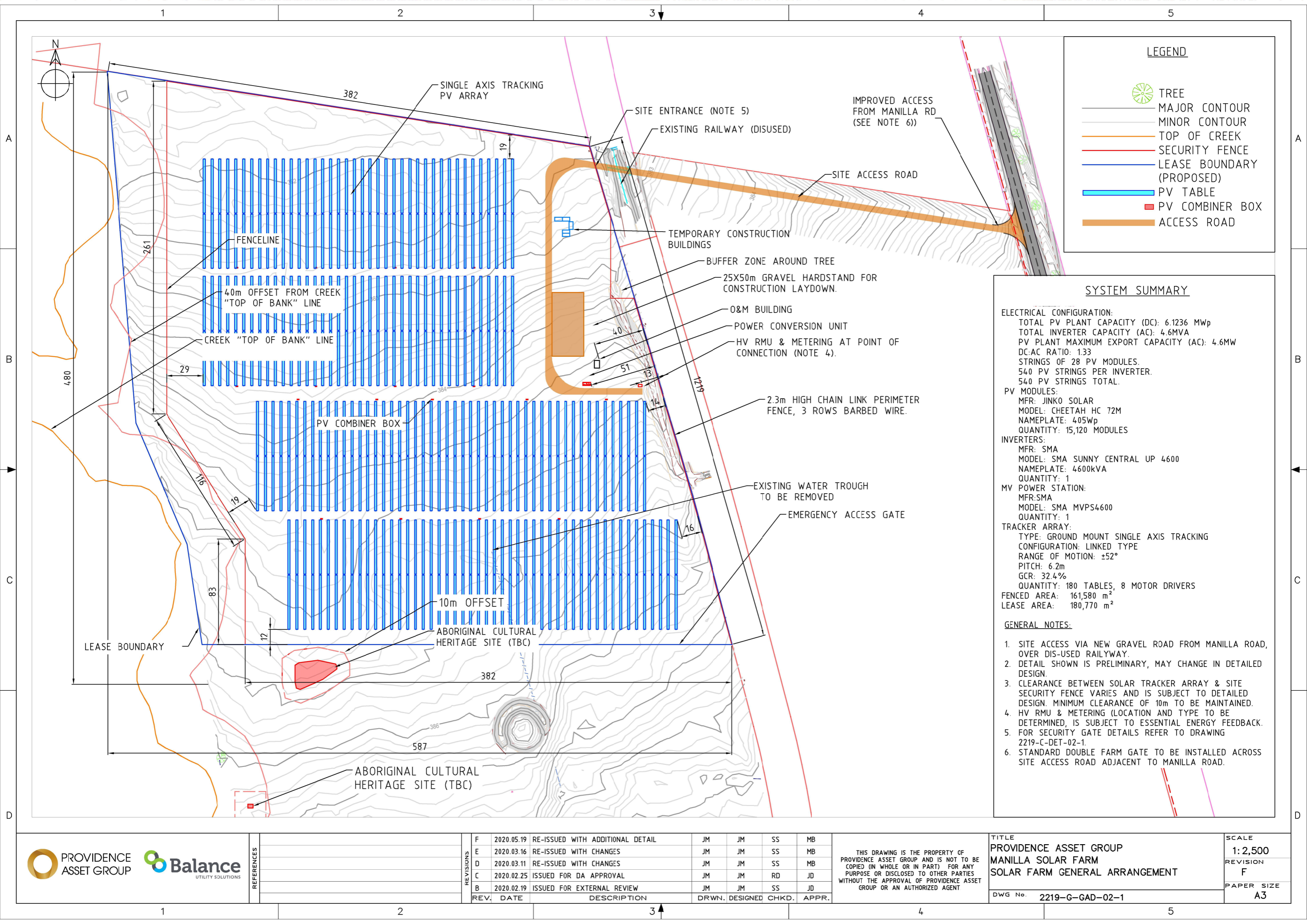
NSW STATE MAP

ADDRESS
4133 MANILLA ROAD, MANILLA, NSW

COORDINATES
ENTRANCE FROM MANILLA RD: -30.776184°, 150.739519°
SOLAR FARM MAIN ENTRANCE: -30.775654°, 150.736002°
SOLAR FARM APPROX CENTER: -30.777281°, 150.734261°



 PROVIDENCE ASSET GROUP 	REFERENCES							THIS DRAWING IS THE PROPERTY OF PROVIDENCE ASSET GROUP AND IS NOT TO BE COPIED (IN WHOLE OR IN PART) FOR ANY PURPOSE OR DISCLOSED TO OTHER PARTIES WITHOUT THE APPROVAL OF PROVIDENCE ASSET GROUP OR AN AUTHORIZED AGENT	TITLE PROVIDENCE ASSET GROUP MANILLA SOLAR FARM LOCATION DETAIL	SCALE
										DNS
										REVISION
										B
										PAPER SIZE
										A3
		REV.	DATE	DESCRIPTION	DRWN.	DESIGNED	CHKD.	APPR.	DWG No.	2219-G-GAD-01-1
		C	2020.03.17	RE-ISSUED WITH CORRECTIONS	JM	JM	SS	MB		
		B	2020.03.16	RE-ISSUED WITH CHANGES	JM	JM	SS	MB		
		A	2020.02.25	ISSUED FOR DA APPROVAL	JM	JM	SS	MB		



LEGEND

TREE

MAJOR CONTOUR

MINOR CONTOUR

TOP OF CREEK

SECURITY FENCE

LEASE BOUNDARY (PROPOSED)

PV TABLE

PV COMBINER BOX

ACCESS ROAD

SYSTEM SUMMARY

ELECTRICAL CONFIGURATION:
TOTAL PV PLANT CAPACITY (DC): 6.1236 MWp
TOTAL INVERTER CAPACITY (AC): 4.6MVA
PV PLANT MAXIMUM EXPORT CAPACITY (AC): 4.6MW
DC:AC RATIO: 1.33
STRINGS OF 28 PV MODULES.
540 PV STRINGS PER INVERTER.
540 PV STRINGS TOTAL.

PV MODULES:
MFR: JINKO SOLAR
MODEL: CHEETAH HC 72M
NAMEPLATE: 405Wp
QUANTITY: 15,120 MODULES

INVERTERS:
MFR: SMA
MODEL: SMA SUNNY CENTRAL UP 4600
NAMEPLATE: 4600kVA
QUANTITY: 1

MV POWER STATION:
MFR:SMA
MODEL: SMA MVPS4600
QUANTITY: 1

TRACKER ARRAY:
TYPE: GROUND MOUNT SINGLE AXIS TRACKING
CONFIGURATION: LINKED TYPE
RANGE OF MOTION: ±52°
PITCH: 6.2m
GCR: 32.4%
QUANTITY: 180 TABLES, 8 MOTOR DRIVERS

FENCED AREA: 161,580 m²
LEASE AREA: 180,770 m²

GENERAL NOTES:
1. SITE ACCESS VIA NEW GRAVEL ROAD FROM MANILLA ROAD, OVER DIS-USED RAILWAY.
2. DETAIL SHOWN IS PRELIMINARY, MAY CHANGE IN DETAILED DESIGN.
3. CLEARANCE BETWEEN SOLAR TRACKER ARRAY & SITE SECURITY FENCE VARIES AND IS SUBJECT TO DETAILED DESIGN. MINIMUM CLEARANCE OF 10m TO BE MAINTAINED.
4. HV RMU & METERING (LOCATION AND TYPE TO BE DETERMINED, IS SUBJECT TO ESSENTIAL ENERGY FEEDBACK.
5. FOR SECURITY GATE DETAILS REFER TO DRAWING 2219-C-DET-02-1.
6. STANDARD DOUBLE FARM GATE TO BE INSTALLED ACROSS SITE ACCESS ROAD ADJACENT TO MANILLA ROAD.

PROVIDENCE ASSET GROUP

Balance
UTILITY SOLUTIONS

REV. DATE DESCRIPTION

2020.05.19 RE-ISSUED WITH ADDITIONAL DETAIL

2020.03.16 RE-ISSUED WITH CHANGES

2020.03.11 RE-ISSUED WITH CHANGES

2020.02.25 ISSUED FOR DA APPROVAL

2020.02.19 ISSUED FOR EXTERNAL REVIEW

DRWN. DESIGNED CHKD. APPR.

JM JM SS MB

JM JM SS MB

JM JM SS MB

JM JM RD JD

JM JM SS JD

THIS DRAWING IS THE PROPERTY OF PROVIDENCE ASSET GROUP AND IS NOT TO BE COPIED (IN WHOLE OR IN PART) FOR ANY PURPOSE OR DISCLOSED TO OTHER PARTIES WITHOUT THE APPROVAL OF PROVIDENCE ASSET GROUP OR AN AUTHORIZED AGENT

TITLE

PROVIDENCE ASSET GROUP
MANILLA SOLAR FARM
SOLAR FARM GENERAL ARRANGEMENT

SCALE

1:2,500

REVISION

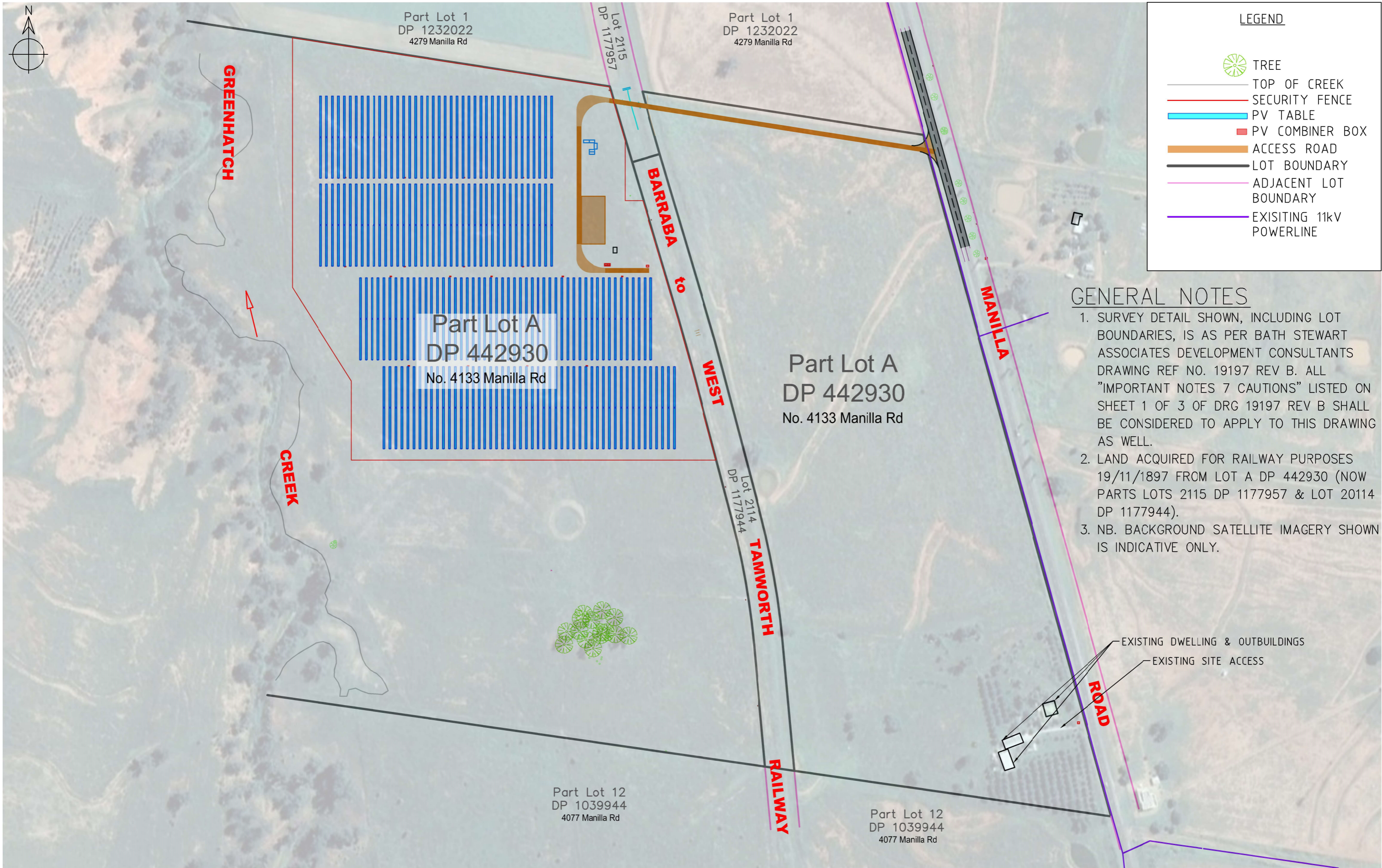
F

PAPER SIZE

A3

DWG No.

2219-G-GAD-02-1

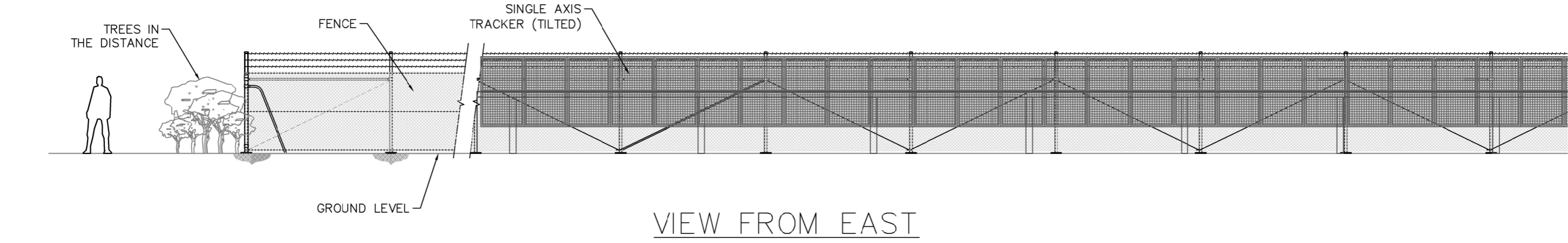
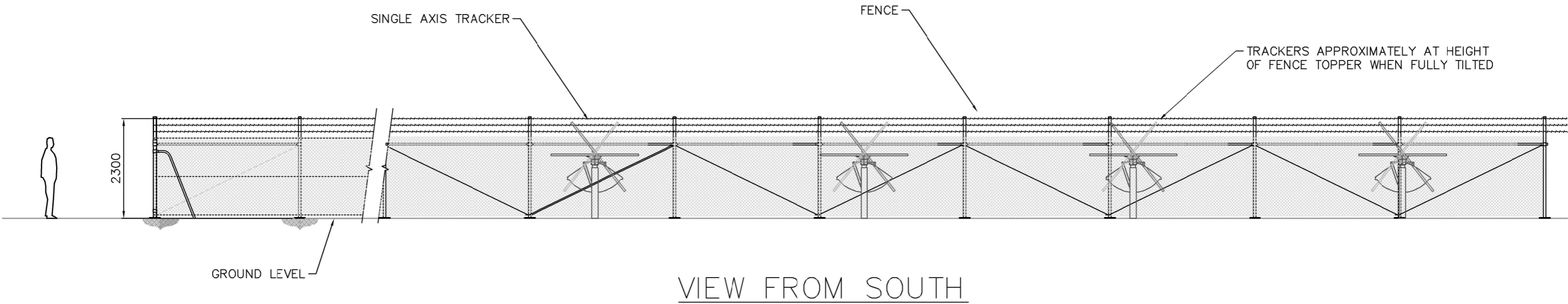


REFERENCES		REVISIONS		TITLE			
				PROVIDENCE ASSET GROUP			
				MANILLA SOLAR FARM			
				LOT BOUNDARY			
REV.	DATE	DESCRIPTION		DRWN.	DESIGNED	CHKD.	APPR.
B	2020.05.19	REVISED WITH ADDITIONAL DETAIL		JM	JM	SS	MB
A	2020.04.28	FIRST ISSUE		JM	JM	SS	MB

TITLE		SCALE	
		1:3,700	
		REVISION B	
		PAPER SIZE A3	
DWG No.		2219-G-GAD-03-1	

GENERAL NOTES

- 1. NB DETAIL PRESENTED IS PARALLEL PROJECTION. PV TRACKERS WILL BE POSITIONED SUFFICIENTLY FAR FROM THE FENCELINE AS TO BE APPEAR SMALLER THAN AS SHOWN.
- 2. GROUND LEVEL SIMPLIFIED TO CONSTANT ELEVATION, SITE ELEVATIONS VARY ACROSS SITE.



REV.	DATE	DESCRIPTION	DRWN.	DESIGNED	CHKD.	APPR.
B	2020.03.11	RE-ISSUED WITH CHANGES	JM	JM	SS	MB
A	2020.02.24	ISSUED FOR DA APPROVAL	JM	JM	SS	MB

A

B

C

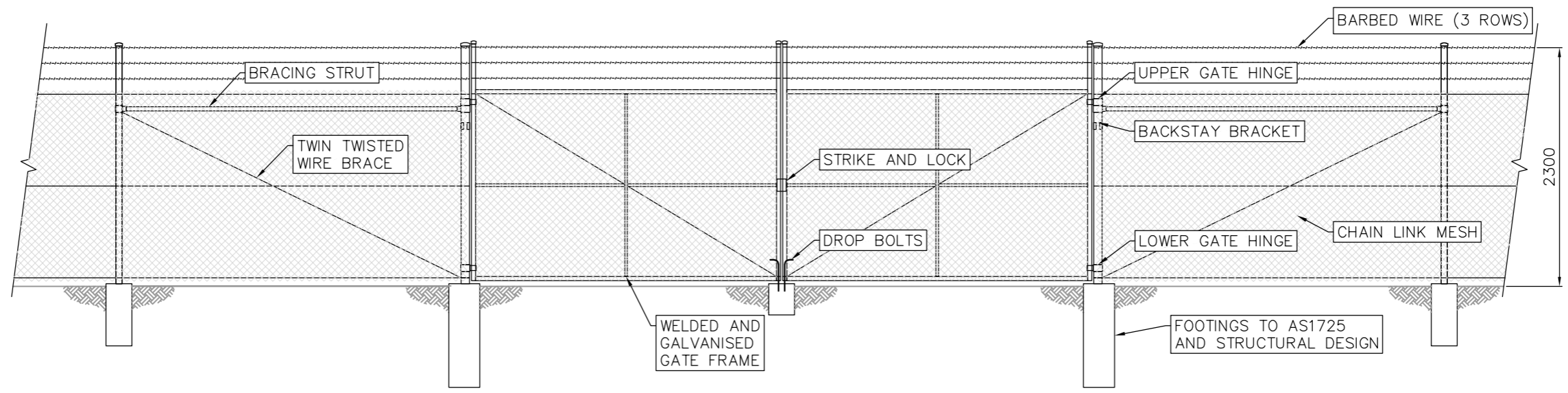
D

A

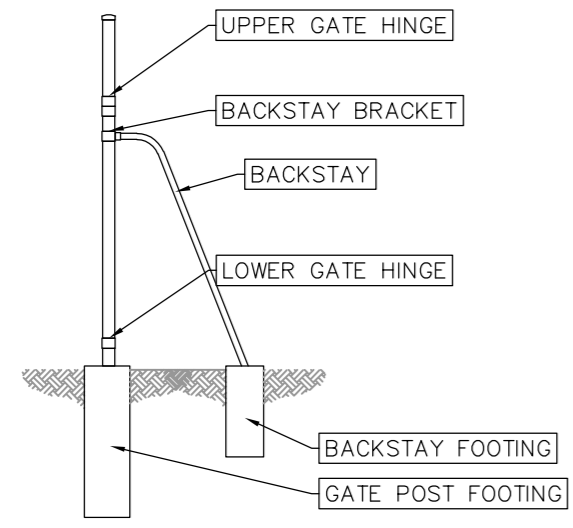
B

C

D



TYPICAL FENCE & GATE ELEVATION



TYPICAL BACKSTAY ELEVATION

GENERAL NOTES

1. SOLAR FARM PERIMETER FENCE TO BE GALVANISED CHAIN LINK MESH FENCE WITH 3 ROWS BARBED WIRE.
2. NOMINAL MESH HEIGHT TO BE 1800mm.
3. NOMINAL OVERALL HEIGHT TO BE 2300mm +/- 100mm.
4. ALL FENCING COMPONENTS AND FOOTINGS TO COMPLY WITH AS 1725.
5. GATE WIDTH AS PER GA LAYOUT DRAWINGS.
6. BRACING STRUT AND WIRE BRACE REQUIRED AT ENDS, CORNERS AND GATES. DIAGONAL BRACE STRUT MAY ALSO BE USED IN LIEU OF BRACE & WIRE.
7. INTERMEDIATE BRACED PANEL CONSISTING OF TWIN TWISTED WIRE BRACE ON BOTH DIAGONALS REQUIRED AT MAX. 150m INTERVALS.
8. PERSONNEL ACCESS GATES REQUIRE BRACING STRUTS ON BOTH SIDES.
9. FOOTING DESIGN TO BE CONFIRMED DURING DETAILED DESIGN.
10. FENCE GENERALLY NOT REQUIRED TO BE EARTHED UNLESS IN CLOSE IS PROXIMITY TO ELECTRICAL COMPONENTS OR AS REQUIRED WITHIN UTILITY EASEMENTS OR SIMILAR. TO BE DETERMINED DURING DETAILED DESIGN.

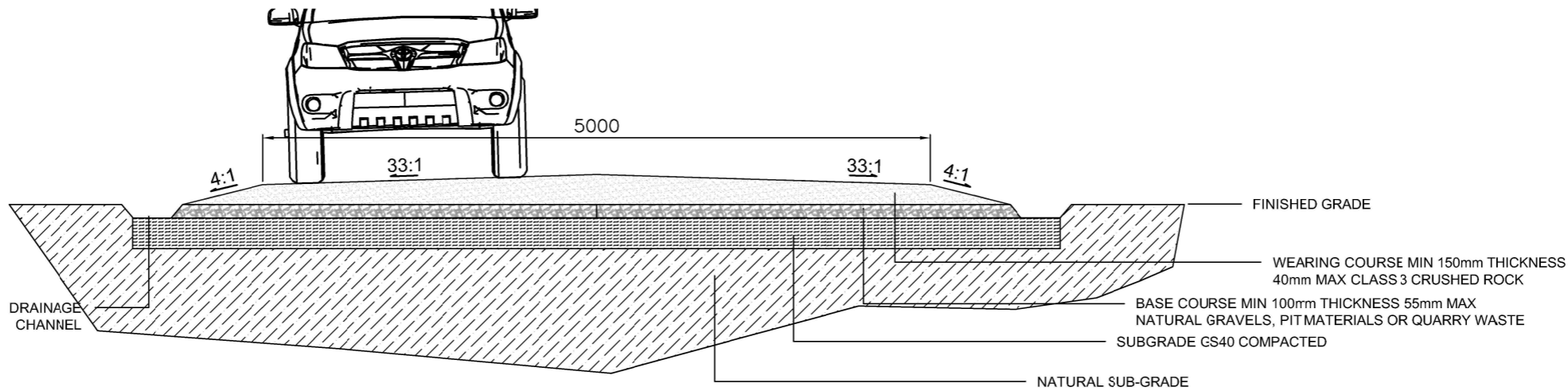
REV. DATE		DESCRIPTION	DRWN.	DESIGNED	CHKD.	APPR.
B	2020.03.11	RE-ISSUED WITH CHANGES	JM	JM	SS	MB
	2020.02.25	ISSUED FOR DA APPROVAL	JM	JM	SS	RD

THIS DRAWING IS THE PROPERTY OF PROVIDENCE ASSET GROUP AND IS NOT TO BE COPIED (IN WHOLE OR IN PART) FOR ANY PURPOSE OR DISCLOSED TO OTHER PARTIES WITHOUT THE APPROVAL OF PROVIDENCE ASSET GROUP OR AN AUTHORIZED AGENT.

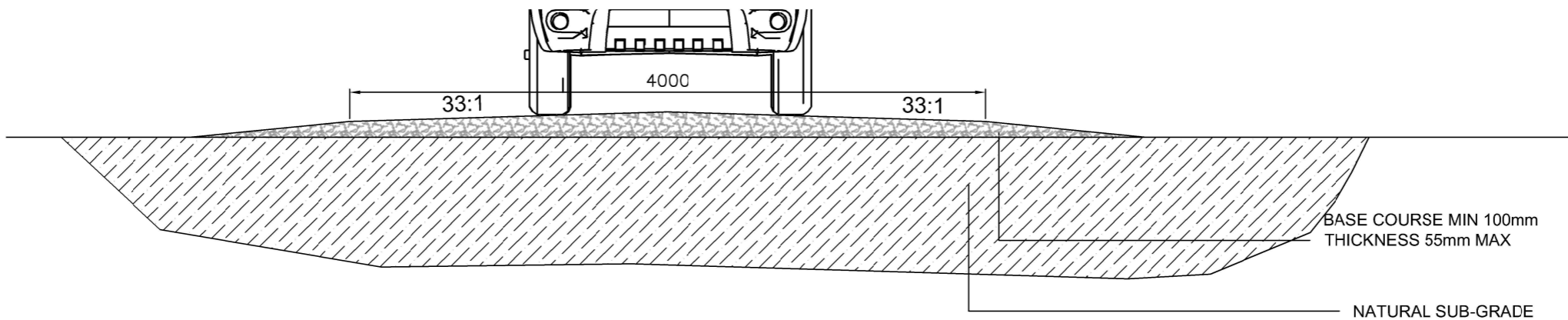
TITLE		SCALE
PROVIDENCE ASSET GROUP		DNS
MANILLA SOLAR FARM		REVISION
TYPICAL FENCING ELEVATIONS		B
		PAPER SIZE
DWG No.	2219-C-DET-02-1	A3

GENERAL NOTES

- 1. DETAILS SHOWN ARE PRELIMINARY, PAVEMENT DESIGN SUBJECT TO FINAL TRAFFICABILITY ASSESSMENT.
- 2. TRAFFIC LANE TYPICAL WIDTHS OF 4m OR 5m AS SHOWN. SECTIONS MAY BE WIDER THAN SHOWN TO ACCOMMODATE REQUIRED VEHICLE TURNING CIRCLES.
- 3. ALL ROADS TO HAVE ADEQUATE CROSS FALL FROM CENTER AND SHALL MAINTAIN MINIMUM LAYER THICKNESSES PER THE PAVEMENT DESIGNS.
- 4. ACCESS ROAD SHALL BE RAISED MINIMUM 150mm ABOVE EXISTING GROUND LEVEL.



1 SITE ACCESS ROAD SECTION



2 PV ARRAY ACCESS ROAD SECTION

REV.	DATE	DESCRIPTION	DRWN.	DESIGNED	CHKD.	APPR.
B	20.03.12	RE-ISSUED WITH CHANGES	JM	JM	SS	MB
A	20.02.28	FIRST ISSUE	JM	JM	SS	MB

THIS DRAWING IS THE PROPERTY OF PROVIDENCE ASSET GROUP AND IS NOT TO BE COPIED (IN WHOLE OR IN PART) FOR ANY PURPOSE OR DISCLOSED TO OTHER PARTIES WITHOUT THE APPROVAL OF PROVIDENCE ASSET GROUP OR AN AUTHORIZED AGENT.

TITLE	PROVIDENCE ASSET GROUP MANILLA SOLAR FARM ROAD SECTION DETAIL	SCALE	AS SHOWN
DWG No.	2219-C-DET-01-1	REVISION	B
		PAPER SIZE	A3

GENERAL NOTES

- 1. DETAILS SHOWN ARE PRELIMINARY, DESIGN SUBJECT TO FINAL TRAFFICABILITY ASSESSMENT.
- 2. CULVERTS INSTALLED EITHER SIDE OF THE EXISTING RAILWAY, GROUND BUILT UP TO RAILWAY LEVEL, TO MAX 1° GRADIENT.
- 3. STANDARD 19m PRIME MOVE AND SEMI TRAILER SHOWN

A

A

B

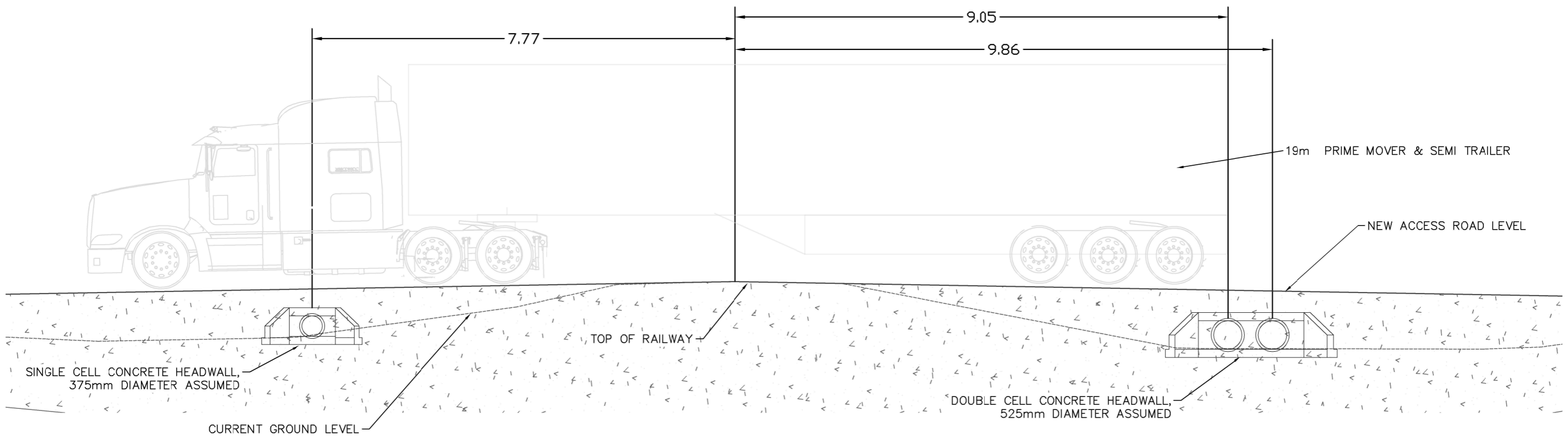
B

C

C

D

D



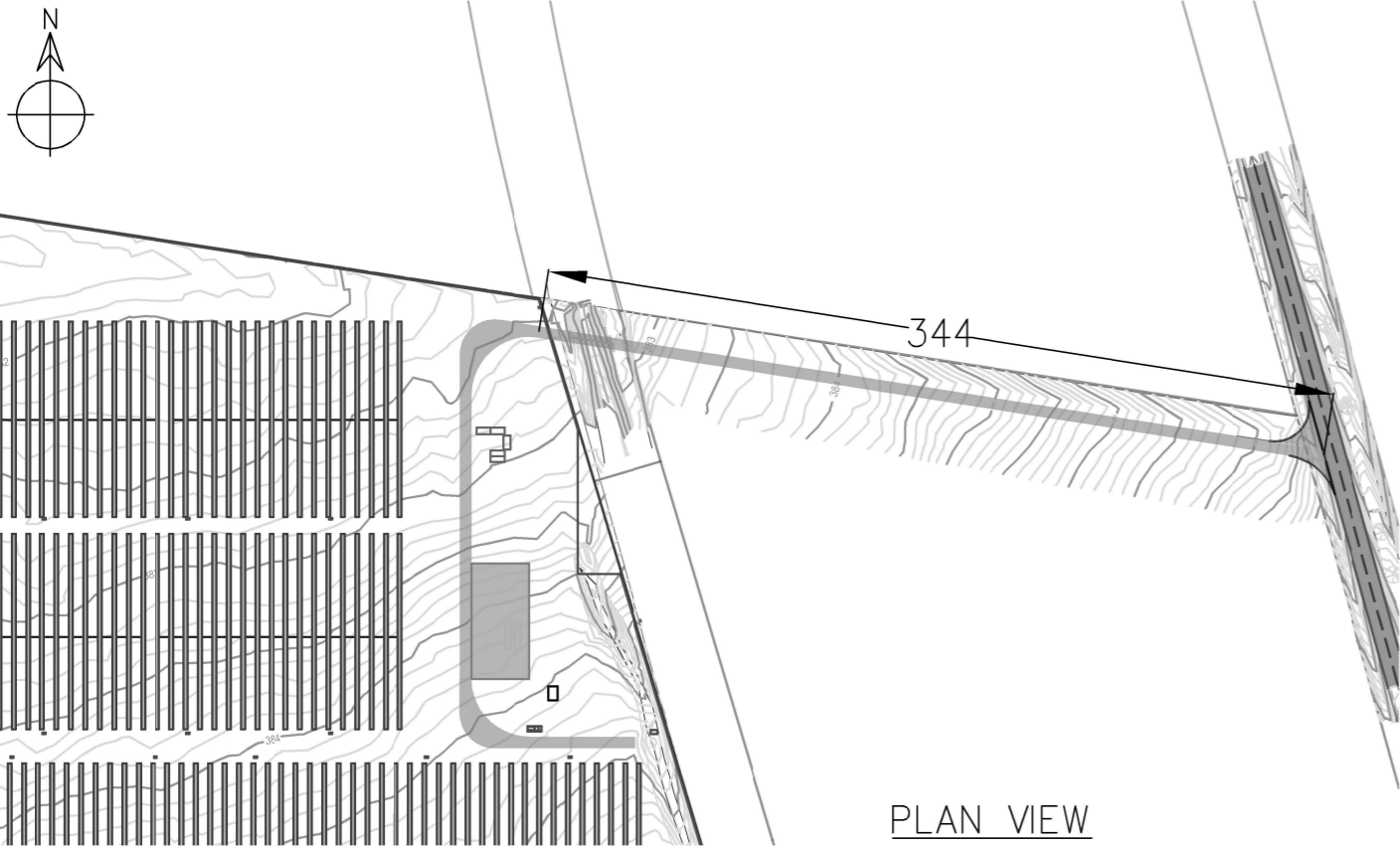
REV. DATE		DESCRIPTION	DRWN.	DESIGNED	CHKD.	APPR.
B	2020.03.11	RE-ISSUED WITH CHANGES	JM	JM	SS	MB
A	2020.02.25	ISSUED FOR DA APPROVAL	JM	JM	RD	RD

THIS DRAWING IS THE PROPERTY OF PROVIDENCE ASSET GROUP AND IS NOT TO BE COPIED (IN WHOLE OR IN PART) FOR ANY PURPOSE OR DISCLOSED TO OTHER PARTIES WITHOUT THE APPROVAL OF PROVIDENCE ASSET GROUP OR AN AUTHORIZED AGENT.

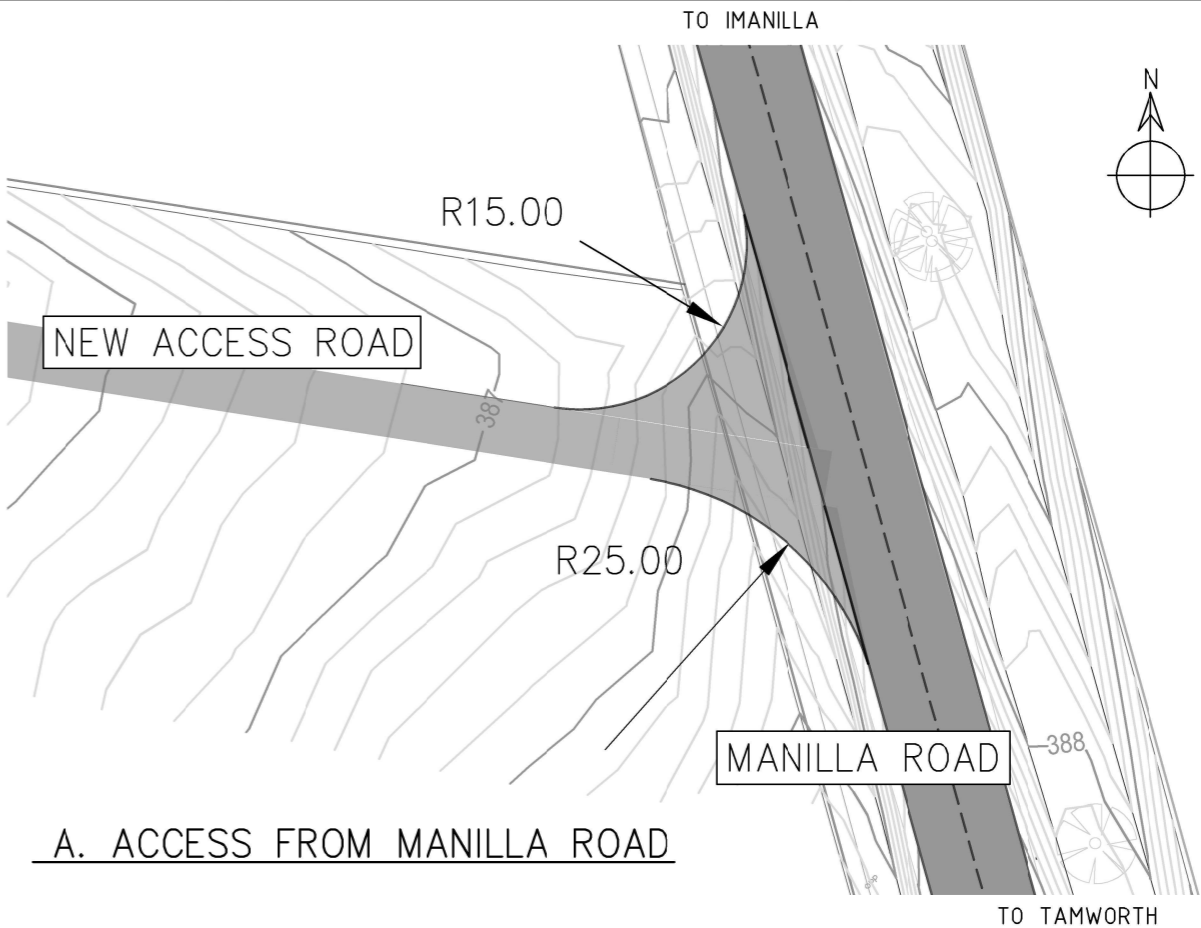
TITLE		SCALE
PROVIDENCE ASSET GROUP		DNS
MANILLA SOLAR FARM		REVISION
RAILWAY CROSSING DETAIL		B
DWG No. 2219-C-DET-05-1		PAPER SIZE
		A3

GENERAL NOTES

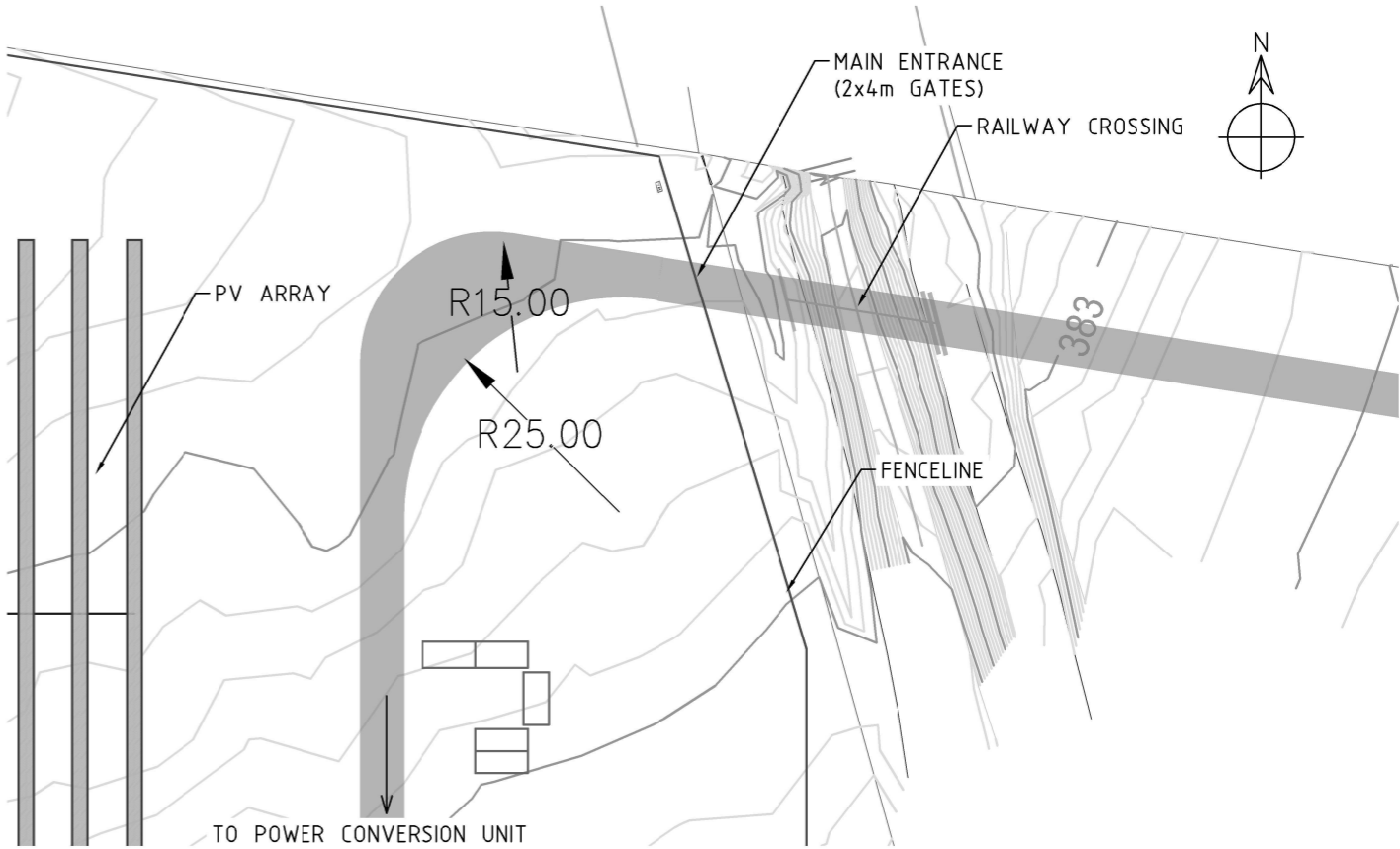
- 1. PRELIMINARY DETAIL SHOWN, MAY CHANGE AT DETAILED DESIGN STAGE.
- 2. NEW ACCESS ROAD TO BE TRAFFICABLE FOR PRIME MOVER WITH SEMI TRAILER. MAJORITY OF TRAFFIC TO BE LIGHT PERSONNEL VEHICLES.
- 3. NEW APRONS TO CONSTRUCTED AT ENTRANCE TO MANILLA ROAD AS SHOWN IN DETAIL A.
- 4. FOR PRELIMINARY ROAD SECTION DETAIL REFER TO DRG 2219-C-DET-01-1.



PLAN VIEW



A. ACCESS FROM MANILLA ROAD



B. SITE MAIN ENTRANCE

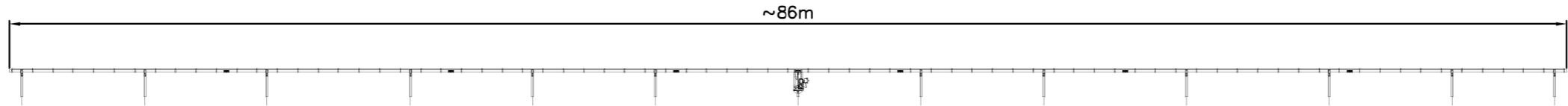
REV.	DATE	DESCRIPTION	DRWN.	DESIGNED	CHKD.	APPR.
C	2020.03.16	RE-ISSUED WITH CHANGES	JM	JM	SS	MB
B	2020.03.11	RE-ISSUED WITH CHANGES	JM	JM	SS	MB
A	2020.02.25	ISSUED FOR DA APPROVAL	JM	JM	RD	RD

THIS DRAWING IS THE PROPERTY OF PROVIDENCE ASSET GROUP AND IS NOT TO BE COPIED (IN WHOLE OR IN PART) FOR ANY PURPOSE OR DISCLOSED TO OTHER PARTIES WITHOUT THE APPROVAL OF PROVIDENCE ASSET GROUP OR AN AUTHORIZED AGENT

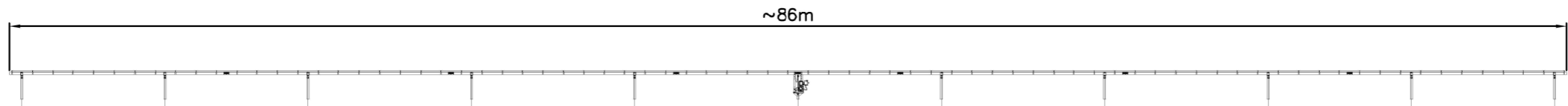
TITLE
PROVIDENCE ASSET GROUP
MANILLA SOLAR FARM
ACCESS ROAD DETAILS

DWG No. 2219-C-GN-03-1

SCALE
DNS
REVISION
C
PAPER SIZE
A3

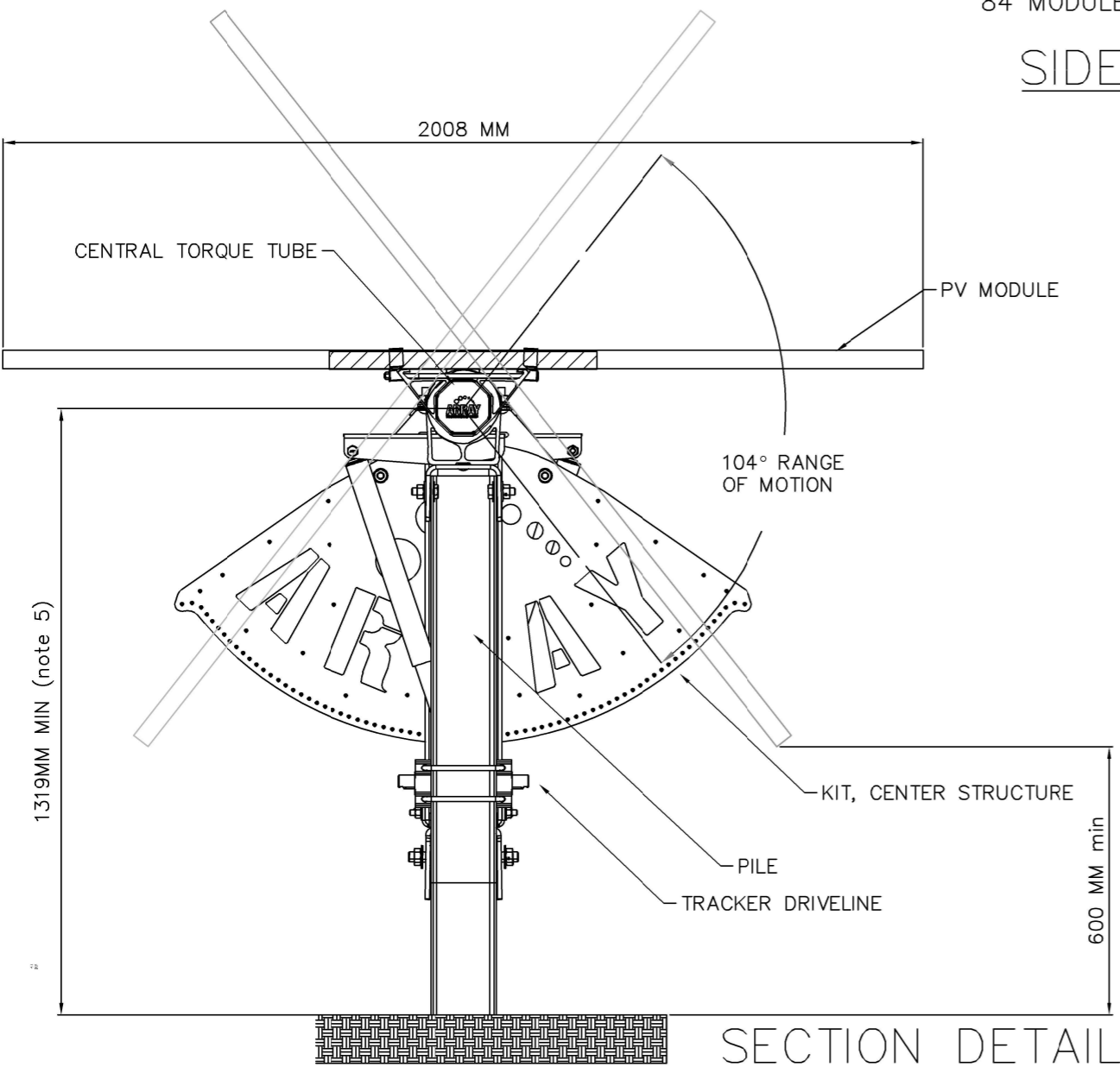


84 MODULE PS EXTERIOR ROW



84 MODULE PS INTERIOR ROW

SIDE VIEWS



SECTION DETAIL

GENERAL NOTES

- 1. ATI DURATRACK Hz V3 LINKED SINGLE AXIS TRACKING SYSTEM SHOWN. TRACKING SYSTEM AND DIMENSIONS MAY CHANGE DURING DETAILED DESIGN.
- 2. SYSTEM FOLLOWS THE SUN'S POSITION TO MAXIMISE GENERATION DURING SOLAR HOURS.
- 3. DIMENSIONS AND CONSTRUCTION PRESENTED ARE PRELIMINARY; FINAL DESIGN WILL DIFFER IN TRACKER FRAME LENGTH (NUMBER OF INSTALLED PV MODULES PER FRAME).
- 4. TRACKING SYSTEM CONSISTS OF SUPPORT FRAMES INSTALLED ON MULTIPLE DRIVEN PILE (STEEL SECTION) FOUNDATIONS CONNECTED BY ARTICULATED DRIVELINE AND UNIVERSAL JOINTS. EACH SET OF CONNECTED FRAMES IS DRIVEN BY A SINGLE ROTATING GEAR DRIVE MOTOR, CONTROLLED BY MCU AND CENTRAL CONTROLLER.
- 5. TYPICAL HEIGHT TO TORQUE TUBE CENTRE VARIES WITH GROUND UNDULATION & REQUIRED HEIGHT ABOVE FLOOD LEVEL (IF APPLICABLE) TYPICAL CLEARANCES OF 600mm EXPECTED BETWEEN GROUND LEVEL & BOTTOM EDGE OF PV MODULE AT MAXIMUM TILT.
- 6. TYPICAL DISTANCE BETWEEN PILES IS 6 TO 8m DEPENDING ON PILE POSITION RELATIVE TO CENTRE, AND WHETHER ROW (TABLE) IS INTERIOR OR EXTERIOR TYPE.

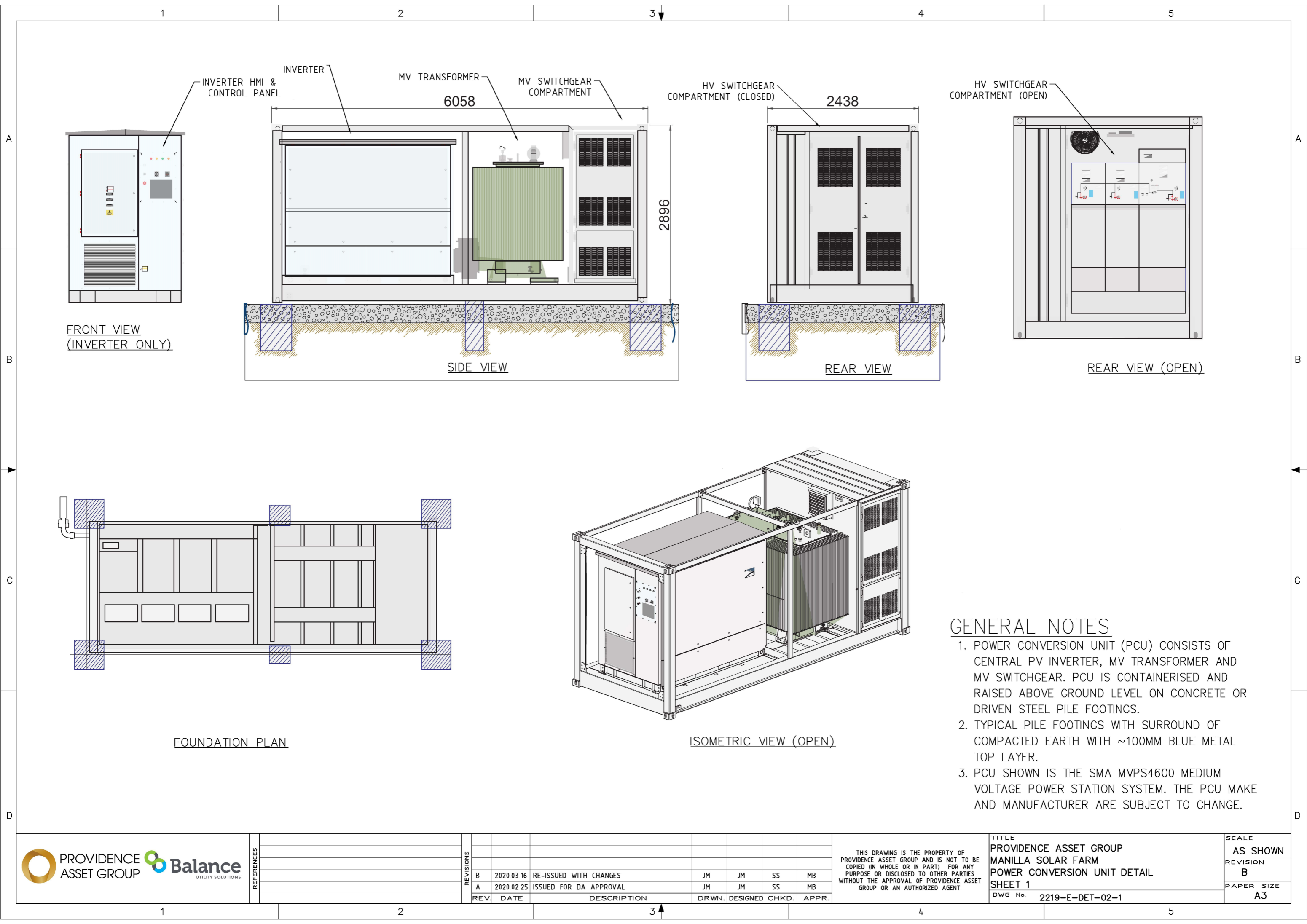
REV.		DATE	DESCRIPTION	DRWN.	DESIGNED	CHKD.	APPR.
C		2020.05.19	RE-ISSUED WITH CHANGES	JM	JM	SS	MB
B		2020.03.16	RE-ISSUED WITH CHANGES	JM	JM	SS	MB
A		2020.02.24	ISSUED FOR DA APPROVAL	JM	JM	SS	MB

REV.		DATE	DESCRIPTION	DRWN.	DESIGNED	CHKD.	APPR.
C		2020.05.19	RE-ISSUED WITH CHANGES	JM	JM	SS	MB
B		2020.03.16	RE-ISSUED WITH CHANGES	JM	JM	SS	MB
A		2020.02.24	ISSUED FOR DA APPROVAL	JM	JM	SS	MB

THIS DRAWING IS THE PROPERTY OF PROVIDENCE ASSET GROUP AND IS NOT TO BE COPIED (IN WHOLE OR IN PART) FOR ANY PURPOSE OR DISCLOSED TO OTHER PARTIES WITHOUT THE APPROVAL OF PROVIDENCE ASSET GROUP OR AN AUTHORIZED AGENT.

TITLE		SCALE
PROVIDENCE ASSET GROUP MANILLA SOLAR FARM PV RACKING CROSS SECTION DETAIL		AS SHOWN
DWG No. 2219-E-DET-01-1		REVISION C
		PAPER SIZE A3

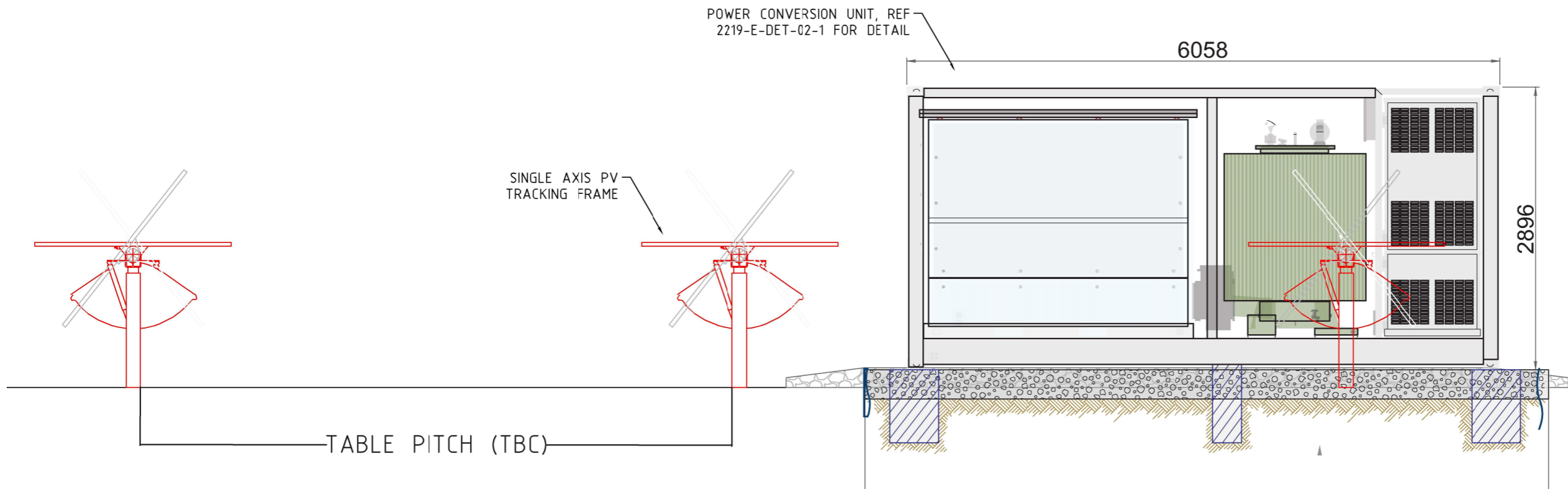
TITLE		SCALE
PROVIDENCE ASSET GROUP MANILLA SOLAR FARM PV RACKING CROSS SECTION DETAIL		AS SHOWN
DWG No. 2219-E-DET-01-1		REVISION C
		PAPER SIZE A3



REV.	DATE	DESCRIPTION	DRWN.	DESIGNED	CHKD.	APPR.
B	2020 03 16	RE-ISSUED WITH CHANGES	JM	JM	SS	MB
A	2020 02 25	ISSUED FOR DA APPROVAL	JM	JM	SS	MB

GENERAL NOTES

- 1. INVERTER SKIDS – TYPICAL INSTALLATION WITH BLUE METAL SURROUND. FOR LOW LYING AREAS SKID REQUIRES RAISING ABOVE FLOOD LEVEL BY COMPACTED EARTH MOUND. TYPICAL 1:3 BATTER, WITH ONE SIDE MIN 1:6 FOR PEDESTRIAN ACCESS, SUBJECT TO FINAL DESIGN.
- 2. SINGLE AXIS TRACKER ASSEMBLY – FULL HEIGHT TYPICALLY 2.3m AGL, +/- 0.5m DEPENDING ON GROUND TOPOGRAPHY. TYPICALLY 1.5m AGL, +/- 0.5m WHEN IN FLAT POSITION.
- 3. MINIMUM CLEARANCE OF 600MM BETWEEN GROUND LEVEL AND PV MODULE EDGE AT MAXIMUM ROTATION TO BE MAINTAINED.
- 4. SINGLE AXIS TRACKING FRAME – TYPICAL TABLE PITCH OF 5.0 – 7.0m
- 5. COMBINER BOX TYPICALLY 1.5m +/- 0.5m HIGH.



REV. DATE		DESCRIPTION	DRWN.	DESIGNED	CHKD.	APPR.
B	2020 03 11	RE-ISSUED WITH CHANGES	JM	JM	SS	MB
	2020 02 25	ISSUED FOR DA APPROVAL	JM	JM	SS	MB

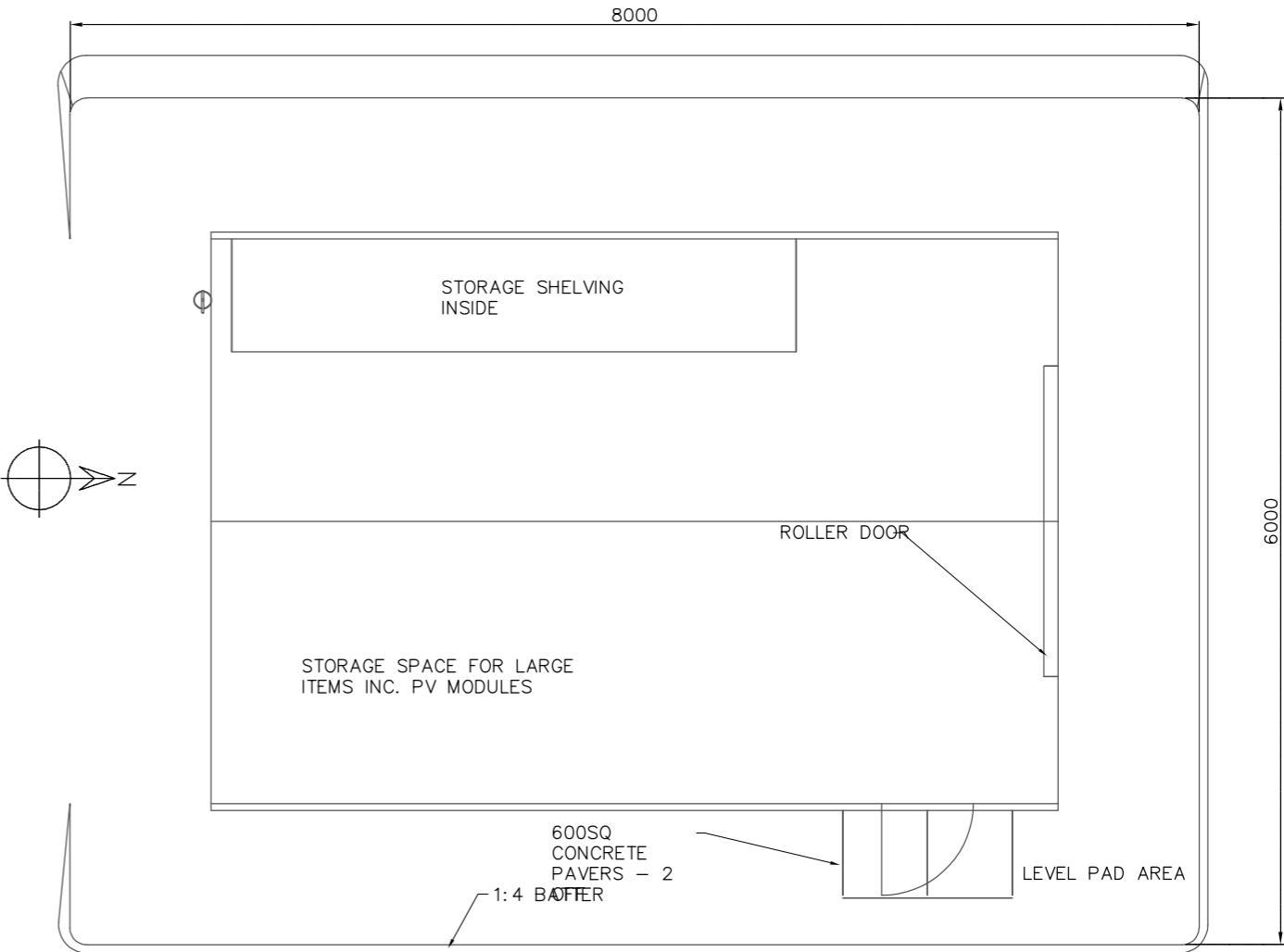
THIS DRAWING IS THE PROPERTY OF PROVIDENCE ASSET GROUP AND IS NOT TO BE COPIED (IN WHOLE OR IN PART) FOR ANY PURPOSE OR DISCLOSED TO OTHER PARTIES WITHOUT THE APPROVAL OF PROVIDENCE ASSET GROUP OR AN AUTHORIZED AGENT

TITLE	PROVIDENCE ASSET GROUP
	MANILLA SOLAR FARM
	POWER CONVERSION UNIT DETAIL
	SHEET 2
DWG No.	2219-E-DET-02-2

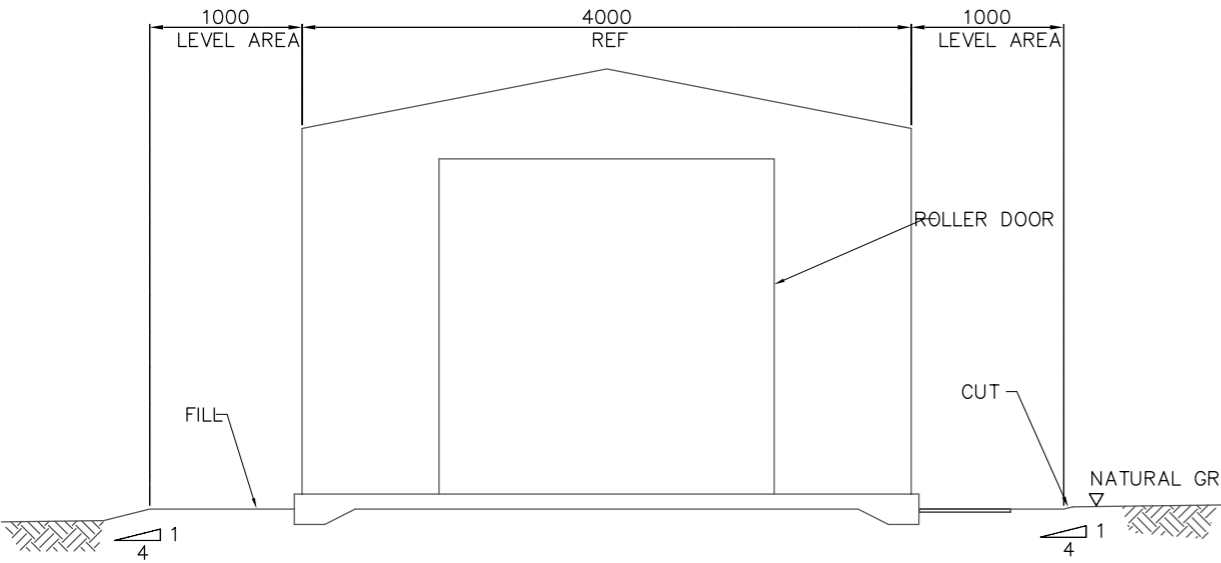
SCALE	AS SHOWN
REVISION	B
PAPER SIZE	A3

GENERAL NOTES:

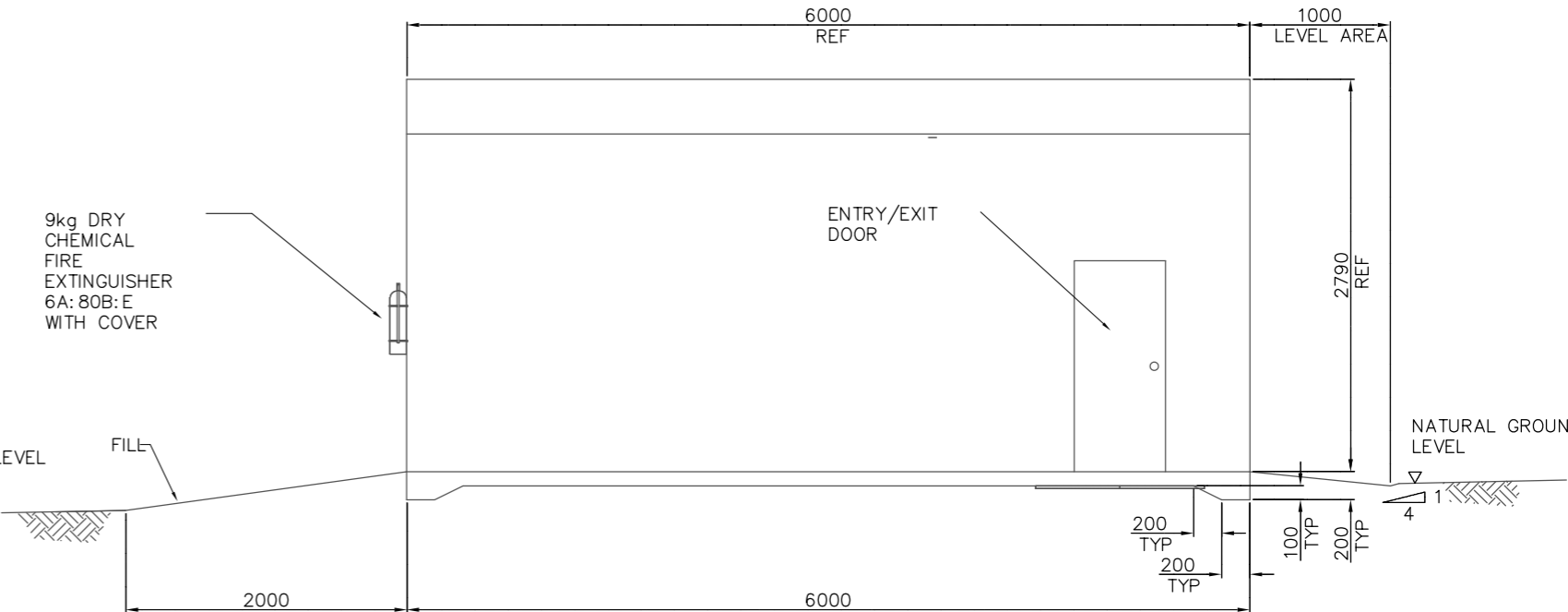
- 1. DIMENSIONS ARE SHOWN IN MILLIMETERS (mm)
- 2. SHED DESIGNED AND SUPPLIED BY SHED KING
- 3. WIND REGION A1, IMPORTANCE LEVEL 2
- 4. COMPLIES WITH PART B1 OF BUILDING CODE OF AUSTRALIA



PLAN



SIDE ELEVATION
(VIEW FROM NORTH POSITION)



ELEVATION

REV.	DATE	DESCRIPTION	DRWN.	DESIGNED	CHKD.	APPR.
0	2020.11.17	ISSUED FOR INFORMATION	JM	JM		

THIS DRAWING IS THE PROPERTY OF BALANCE POWER AND ENERGY (BPE) AND IS NOT TO BE COPIED (IN WHOLE OR IN PART) FOR ANY PURPOSE OR DISCLOSED TO OTHER PARTIES WITHOUT THE APPROVAL OF BALANCE POWER AND ENERGY OR AN AUTHORIZED AGENT.

TITLE
PROVIDENCE ASSET GROUP
MANILLA SOLAR FARM
SHED DETAIL

DWG No. 10010-C-DET-05-1

SCALE
AS SHOWN
REVISION
0
PAPER SIZE
A3

Site - General Description

This landscape design report has been prepared in accordance with the requirements of Tamworth Regional Councils Development Control Plan 2010. The subject site is located at Lot A DP 442930, 4133 Manilla Road, Manilla NSW.

The site consists of the western potion of Lot A DP 442930, west of the former Barraba, West Tamworth Rail Line, Greenhatch creek runs along the sites western boundary. The topography of the site runs from south down to the north and falls approximately eight metres. The surrounding landscape character is rural consisting of open grazing land and scattered trees. Rural homesteads are located some distance away the closest being approximately 430 metres away on the opposite side of Manilla Road. There are seven homesteads located within a one kilometre radius of the site.

Proposed Development

The proposed development is a solar farm which includes solar panel trackers, off load area, car park, settlement pond, power lines to the nearby substation, access road and future battery storage areas. Ground treatment under the panels will remain as pasture and is to be grazed by livestock.

Proposed Landscape Works and Objectives

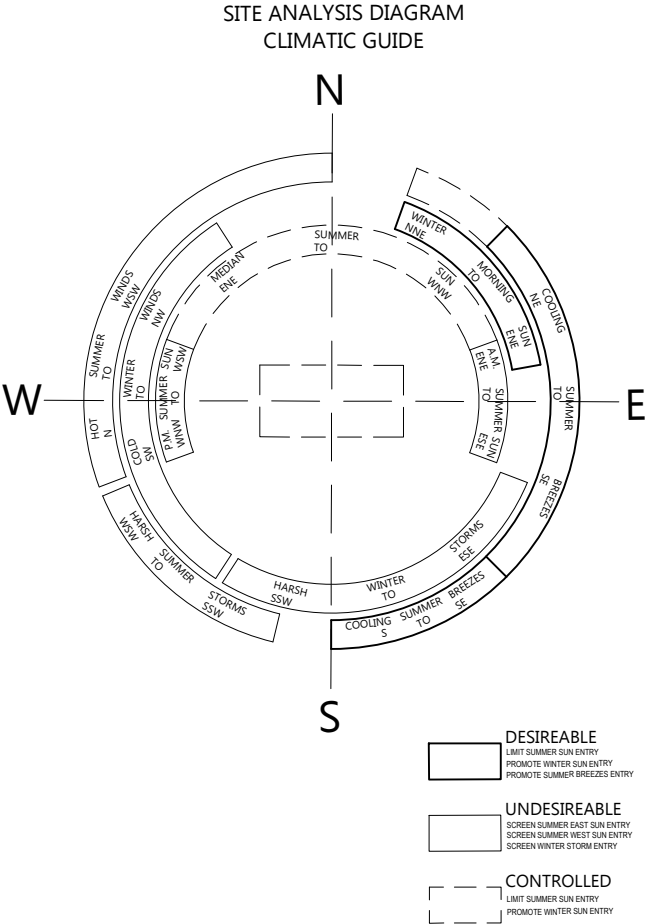
- The proposed landscape works and objectives are to screen the site from Manilla Road and nearby residences. This will involve screening the eastern, southern and northern boundaries.
- A plant selection of hardy native species suitable to the local environment to enhance the local urban ecology
- Design which is responsive to the bulk and scale of the development.

Landscape Themes

The planting palette is based on durable native species which enhance the local ecology and complement the rural character of the surrounding landscape. Large shrubs and small trees will be used along the eastern and northern boundaries to screen any potential visual impact the proposal may have when viewed from Manilla Road or nearby dwellings. Larger tree species are proposed intermittently along the eastern side of the rail line easement to assimilate with the current landscape setting.

Hardworks and surface treatments

The hardstand areas are limited to the car park and off load area. The access road will be formed with gravel. As previously mentioned the ground treatment under and around the trackers will be pasture. A perimeter security fence is to be installed around the boundary of the site.



MARA Consulting Pty Ltd

Consultation + Urban Design

Level 1, 161 King Street, Newcastle NSW 2300

t: 02 4965 4317

e: mara@maraconsulting.com.au

w: maraconsulting.com.au

Scale 1 : 5000 @ A3

Revisions		
Issue	Details	Date
A	Draft Issue	21.03.20
B	DA Issue	25.03.20
C	DA Issue	27.03.20

Client:
KDC Pty Ltd

Project:
Manilla Solar Farm

Title:

Site Analysis and Report


Site: 4133 Manilla Road, Manilla


Date: 27 March 2020
Job No: 1968

Revision: C Sheet:

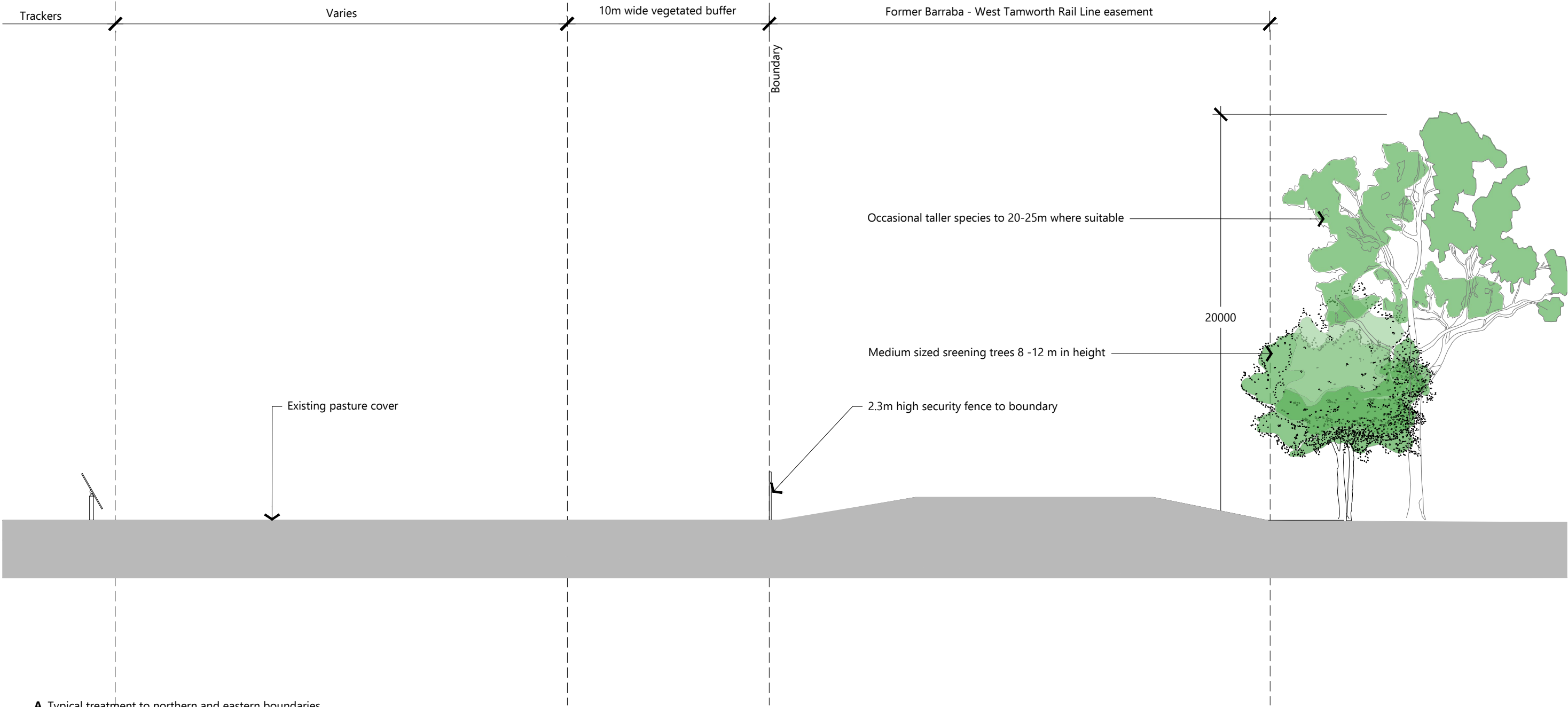


PLANTING LEGEND
Refer to Planting Schedule

Proposed large trees

Proposed small trees/large shrubs

PLANTING SCHEDULE				
Botanical Name	Common Name	Pot Size	Height	Spacing m
Large Trees				
<i>Eucalyptus blakelyi</i>	Blakeley's red Gum	5 litre	20	As shown
<i>Eucalyptus dealbata</i>	Tumbledown Gum	5 litre	15	As shown
<i>Eucalyptus melliodora</i>	Yellow Box	5 litre	30	As shown
Small Trees				
<i>Acacia implexa</i>	Hickory Wattle	2.5 litre	12	As shown
<i>Acacia pendula</i>	Weeping Myall	2.5 litre	13	As shown
<i>Acacia salicina</i>	Native Willow	2.5 litre	13	As shown
<i>Melaleuca bracteata</i>	Black Tea Tree	2.5 litre	15	As shown
<i>Melaleuca linariifolia</i>	Snow in Summer	2.5 litre	8	As shown
<i>Melaleuca nodosa</i>	Black Tea Tree	2.5 litre	3	As shown
Notes: 1. Contractor to make good of any disturbance made to existing pasture				



A. Typical treatment to northern and eastern boundaries

Section

Scale 1 : 200 @ A3



MARA Consulting Pty Ltd
Consultation + Urban Design
Level 1, 161 King Street, Newcastle NSW 2300
t: 02 4965 4317
e: mara@maraconsulting.com.au
w: maraconsulting.com.au

Revisions		
Issue	Details	Date
A	Draft Issue	21.03.20
B	DA Issue	25.03.20
C	DA Issue	27.03.20

Client:
KDC Pty Ltd

Project:
Manilla Solar Farm

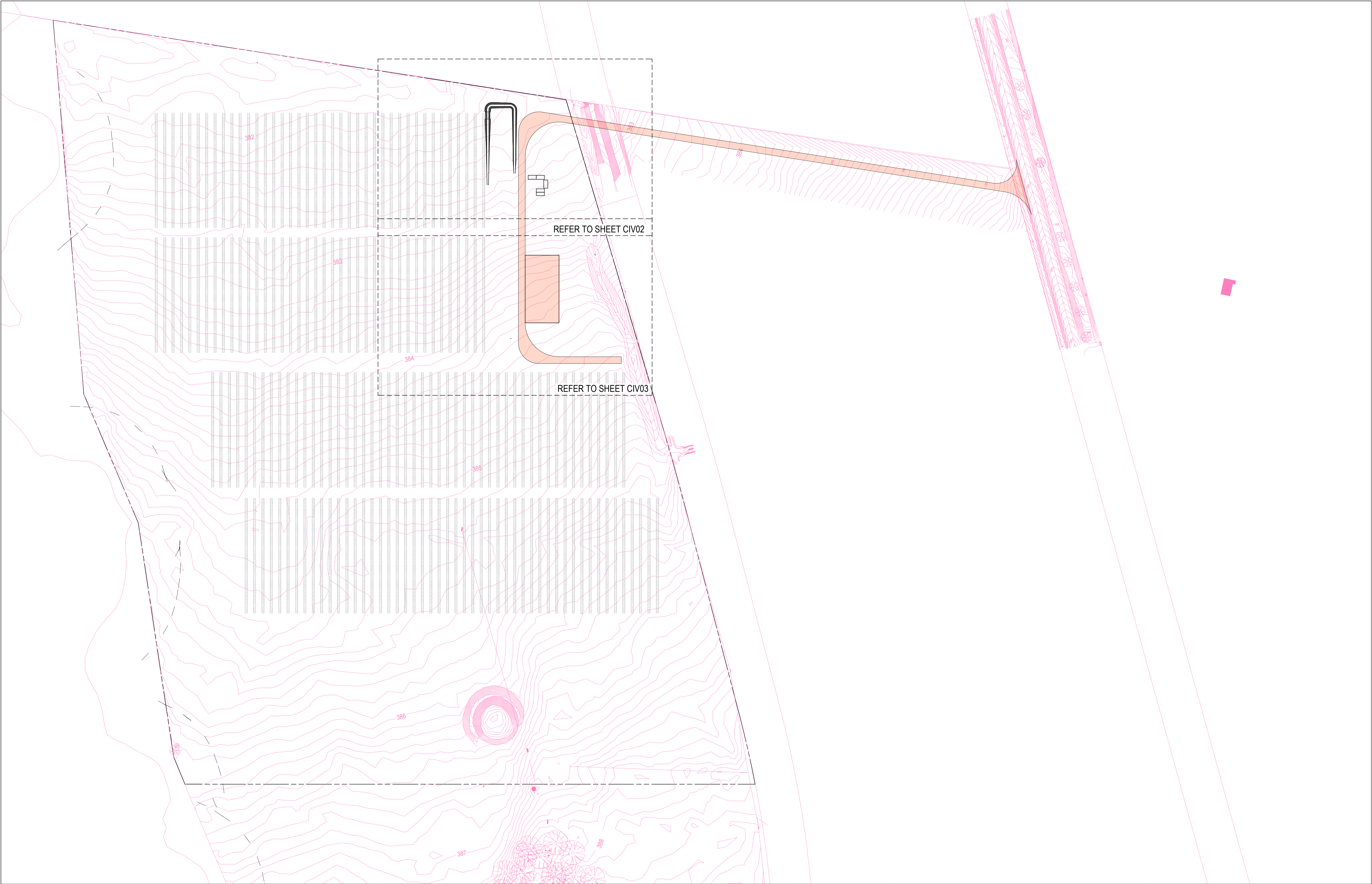
Title:

Section

Site: 4133 Manilla Road, Manilla

Date: 27 March 2020
Job No: 1968

Revision: C Sheet:



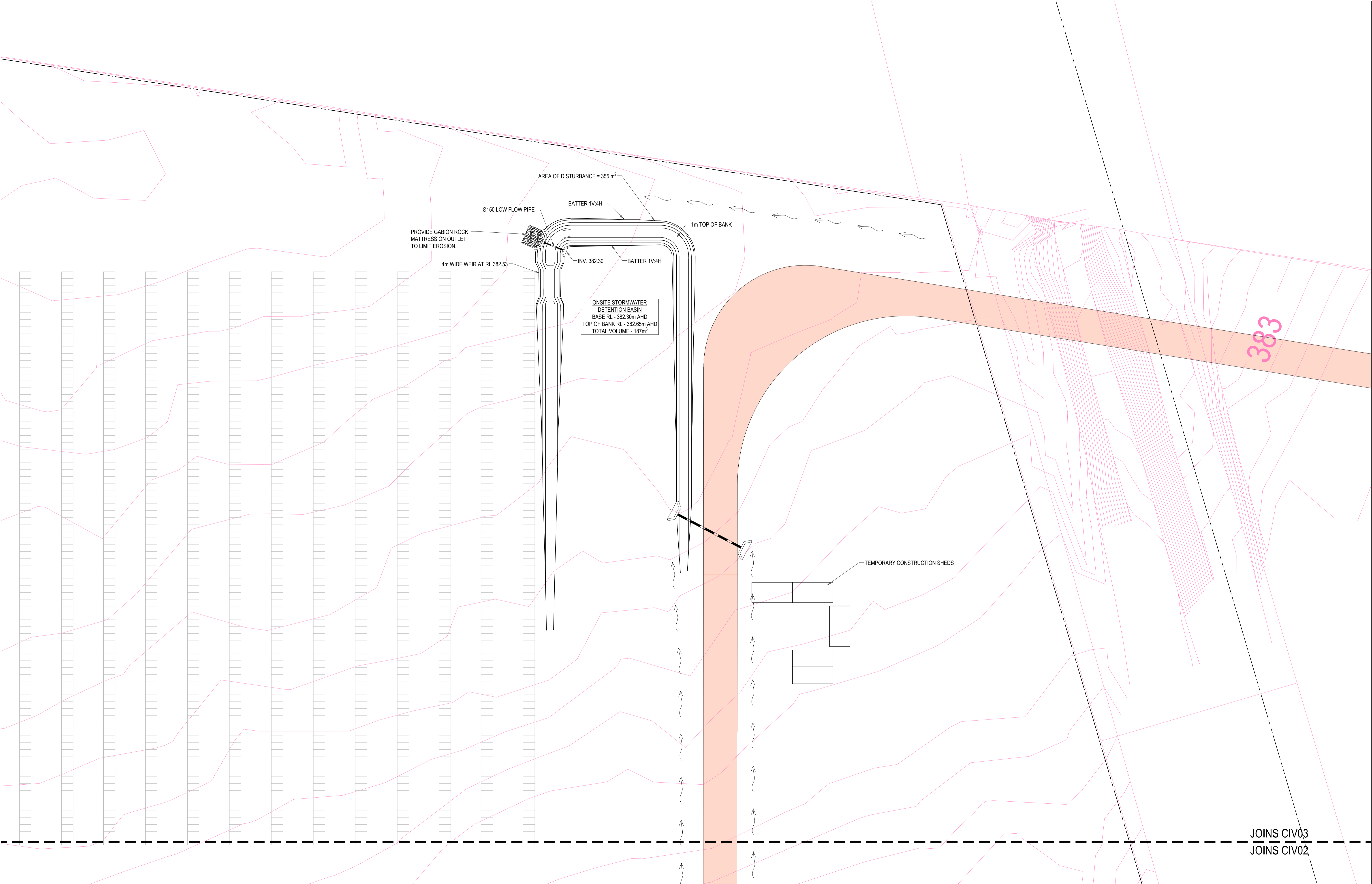
REVISIONS																																																																																																																																																																																																																																																																																																																																																																																																																																																																																																																																																																																																																																																																																																																																																																																																																																																																																																																																																																																																																																																																																																																																																																																																																																																																																																																																																																																																																			
-----------	--	--	--	--	--	--	--	--	--	--	--	--	--	--	--	--	--	--	--	--	--	--	--	--	--	--	--	--	--	--	--	--	--	--	--	--	--	--	--	--	--	--	--	--	--	--	--	--	--	--	--	--	--	--	--	--	--	--	--	--	--	--	--	--	--	--	--	--	--	--	--	--	--	--	--	--	--	--	--	--	--	--	--	--	--	--	--	--	--	--	--	--	--	--	--	--	--	--	--	--	--	--	--	--	--	--	--	--	--	--	--	--	--	--	--	--	--	--	--	--	--	--	--	--	--	--	--	--	--	--	--	--	--	--	--	--	--	--	--	--	--	--	--	--	--	--	--	--	--	--	--	--	--	--	--	--	--	--	--	--	--	--	--	--	--	--	--	--	--	--	--	--	--	--	--	--	--	--	--	--	--	--	--	--	--	--	--	--	--	--	--	--	--	--	--	--	--	--	--	--	--	--	--	--	--	--	--	--	--	--	--	--	--	--	--	--	--	--	--	--	--	--	--	--	--	--	--	--	--	--	--	--	--	--	--	--	--	--	--	--	--	--	--	--	--	--	--	--	--	--	--	--	--	--	--	--	--	--	--	--	--	--	--	--	--	--	--	--	--	--	--	--	--	--	--	--	--	--	--	--	--	--	--	--	--	--	--	--	--	--	--	--	--	--	--	--	--	--	--	--	--	--	--	--	--	--	--	--	--	--	--	--	--	--	--	--	--	--	--	--	--	--	--	--	--	--	--	--	--	--	--	--	--	--	--	--	--	--	--	--	--	--	--	--	--	--	--	--	--	--	--	--	--	--	--	--	--	--	--	--	--	--	--	--	--	--	--	--	--	--	--	--	--	--	--	--	--	--	--	--	--	--	--	--	--	--	--	--	--	--	--	--	--	--	--	--	--	--	--	--	--	--	--	--	--	--	--	--	--	--	--	--	--	--	--	--	--	--	--	--	--	--	--	--	--	--	--	--	--	--	--	--	--	--	--	--	--	--	--	--	--	--	--	--	--	--	--	--	--	--	--	--	--	--	--	--	--	--	--	--	--	--	--	--	--	--	--	--	--	--	--	--	--	--	--	--	--	--	--	--	--	--	--	--	--	--	--	--	--	--	--	--	--	--	--	--	--	--	--	--	--	--	--	--	--	--	--	--	--	--	--	--	--	--	--	--	--	--	--	--	--	--	--	--	--	--	--	--	--	--	--	--	--	--	--	--	--	--	--	--	--	--	--	--	--	--	--	--	--	--	--	--	--	--	--	--	--	--	--	--	--	--	--	--	--	--	--	--	--	--	--	--	--	--	--	--	--	--	--	--	--	--	--	--	--	--	--	--	--	--	--	--	--	--	--	--	--	--	--	--	--	--	--	--	--	--	--	--	--	--	--	--	--	--	--	--	--	--	--	--	--	--	--	--	--	--	--	--	--	--	--	--	--	--	--	--	--	--	--	--	--	--	--	--	--	--	--	--	--	--	--	--	--	--	--	--	--	--	--	--	--	--	--	--	--	--	--	--	--	--	--	--	--	--	--	--	--	--	--	--	--	--	--	--	--	--	--	--	--	--	--	--	--	--	--	--	--	--	--	--	--	--	--	--	--	--	--	--	--	--	--	--	--	--	--	--	--	--	--	--	--	--	--	--	--	--	--	--	--	--	--	--	--	--	--	--	--	--	--	--	--	--	--	--	--	--	--	--	--	--	--	--	--	--	--	--	--	--	--	--	--	--	--	--	--	--	--	--	--	--	--	--	--	--	--	--	--	--	--	--	--	--	--	--	--	--	--	--	--	--	--	--	--	--	--	--	--	--	--	--	--	--	--	--	--	--	--	--	--	--	--	--	--	--	--	--	--	--	--	--	--	--	--	--	--	--	--	--	--	--	--	--	--	--	--	--	--	--	--	--	--	--	--	--	--	--	--	--	--	--	--	--	--	--	--	--	--	--	--	--	--	--	--	--	--	--	--	--	--	--	--	--	--	--	--	--	--	--	--	--	--	--	--	--	--	--	--	--	--	--	--	--	--	--	--	--	--	--	--	--	--	--	--	--	--	--	--	--	--	--	--	--	--	--	--	--	--	--	--	--	--	--	--	--	--	--	--	--	--	--	--	--	--	--	--	--	--	--	--	--	--	--	--	--	--	--	--	--	--	--	--	--	--	--	--	--	--	--	--	--	--	--	--	--	--	--	--	--	--	--	--	--	--	--	--	--	--	--	--	--	--	--	--	--	--	--	--	--	--	--	--	--	--	--	--	--	--	--	--	--	--	--	--	--	--	--	--	--	--	--	--	--	--	--	--	--	--	--	--	--	--	--	--	--	--	--	--	--	--	--	--	--	--	--	--	--	--	--	--	--	--	--	--	--	--	--	--	--	--	--	--	--	--	--	--	--	--	--	--	--	--	--	--	--	--	--	--	--	--	--	--	--	--	--	--	--	--	--	--	--	--	--	--	--	--	--	--	--	--	--	--	--	--	--	--	--	--	--	--	--	--	--	--	--	--	--	--	--	--	--	--	--	--	--	--	--	--	--	--	--	--	--	--	--	--	--	--	--	--	--	--	--	--	--	--	--	--	--	--	--	--	--	--	--	--	--	--	--	--	--	--	--	--	--	--	--	--	--	--	--	--	--	--	--	--	--	--	--	--	--	--	--	--	--	--	--	--	--	--	--	--	--	--	--	--	--	--	--	--	--	--	--	--	--	--	--	--	--	--	--	--	--	--	--	--	--	--	--	--	--	--	--	--	--	--	--	--	--	--	--	--	--	--	--	--	--	--	--	--	--	--	--	--	--	--	--	--	--	--	--	--	--	--	--	--	--	--	--	--	--	--	--	--	--	--	--	--	--	--	--	--	--	--	--	--	--	--	--	--	--	--	--	--	--	--	--	--	--	--	--	--	--	--	--	--	--	--	--	--	--	--	--	--	--	--	--	--	--	--	--	--	--	--	--	--	--	--	--	--	--	--	--	--	--	--	--	--	--	--	--	--	--	--	--	--	--	--	--	--	--	--	--	--	--	--	--	--	--	--	--	--	--	--	--	--	--	--	--	--	--	--	--	--	--	--	--	--	--	--	--	--	--	--

~~JOINS CIV03~~
~~JOINS CIV02~~

50m x 25m GRAVEL HARDSTAND AREA FOR CONSTRUCTION LAYDOWN

384

REVISIONS								This drawing is <u>not</u> approved for construction unless signed.					PROPOSED HARDSTAND / BASIN PLAN - SHEET 1 MANILLA SOLAR FARM, MANILLA PROVIDENCE	DRAWING STATUS		SHEET SIZE																																																																																																																																																																																																																																																																																																																																																																																																																																																																																																																																																																																																																																																																																																																																																																																																																																																																																																																																																																																																																																																																																																																																																																																																			
														NOT FOR CONSTRUCTION		A1																																																																																																																																																																																																																																																																																																																																																																																																																																																																																																																																																																																																																																																																																																																																																																																																																																																																																																																																																																																																																																																																																																																																																																																																			
	C	23.02.20	F.M.	M.M.	M.M.	ISSUED FOR DA								SCALE	1:250																																																																																																																																																																																																																																																																																																																																																																																																																																																																																																																																																																																																																																																																																																																																																																																																																																																																																																																																																																																																																																																																																																																																																																																																				
	B	20.03.20	F.M.	M.M.	M.M.	CLIENT REVIEW																																																																																																																																																																																																																																																																																																																																																																																																																																																																																																																																																																																																																																																																																																																																																																																																																																																																																																																																																																																																																																																																																																																																																																																																													
	A	17.03.30	F.M.	M.M.	M.M.	PRELIMINARY ISSUE																																																																																																																																																																																																																																																																																																																																																																																																																																																																																																																																																																																																																																																																																																																																																																																																																																																																																																																																																																																																																																																																																																																																																																																																													
	REV	DATE	DRN	CHK	APP	DRAWING STATUS																																																																																																																																																																																																																																																																																																																																																																																																																																																																																																																																																																																																																																																																																																																																																																																																																																																																																																																																																																																																																																																																																																																																																																																																													
										COPYRIGHT - This drawing and the information provided shall remain the property of DRB Consulting Engineers Pty Ltd (DRB) and may not be used, copied or reproduced, in whole or part, for any purpose other than that for which it was supplied without the prior consent of DRB.																																																																																																																																																																																																																																																																																																																																																																																																																																																																																																																																																																																																																																																																																																																																																																																																																																																																																																																																																																																																																																																																																																																																																																																																									

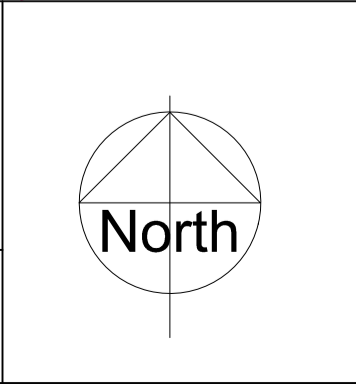


REVISIONS						
	C	23.03.20	F.M.	M.M.	M.M.	ISSUED FOR DA
	B	20.03.20	F.M.	M.M.	M.M.	CLIENT REVIEW
A	17.03.30	F.M.	M.M.	M.M.	PRELIMINARY ISSUE	
REV	DATE	DRN	CHK	APP	DRAWING STATUS	

This drawing is not approved for construction unless signed.

Mathew McNamara
BEing (Civil) Hons MIE (Aust)

COPYRIGHT - This drawing and the information provided shall remain the property of DRB Consulting Engineers Pty Ltd (DRB) and may not be used, copied or reproduced, in whole or part, for any purpose other than that for which it was supplied without the prior consent of DRB.



PO BOX 4105 Kotara East 2305
0402 915 549
ABN 64 625 755 482



CONSULTING
ENGINEERS

PROPOSED HARDSTAND / BASIN PLAN - SHEET 2
MANILLA SOLAR FARM,
MANILLA
PROVIDENCE

DRAWING STATUS		SHEET SIZE
NOT FOR CONSTRUCTION		A1
PROJECT REF No. 190284		SCALE 1:250
DRAWING No. CIV03		REVISION C